



UNEVN

Unevsn Ltd

SEP 2025

PRODUCT CATALOGUE

Pricing & Overview

www.unevn.gg

contact@unevn.gg

INTRODUCTION & CONTENTS

ABOUT THIS CATALOGUE

This catalogue gives you a complete overview of UNEVN's products, services, and packages.

A practical tool for schools, colleges, universities, sports clubs, hotels and resorts, event organisers, and corporate clients!

WHO IT IS FOR

- Education institutions
- Hospitality & resorts
- Event and esports organizers
- Corporate & hybrid spaces

Contents

Introduction	1
How to Buy UNEVN & Customer Insights	2
Product Families & Services	3
Marketing & Branding Packages	9
Price List	10
Contacts	12

HOW TO BUY UNEVN

ALL-IN-ONE SOLUTIONS

UNEVN delivers everything needed to build scalable, esports-ready and multi-purpose digital spaces:

Hardware, software, services, branding, and support.

THE PROCESS

Select – Choose a package or tailor your own.

Customize – Add branding, accessories, and services.

Deliver – We handle logistics, installation, and training.

Operate – Backed by SLA and services, ready to grow.

CUSTOMER INSIGHTS

Scalable

Start small, expand anytime.

Customizable

Tailor desks, graphics, and branding.

Supported

SLA levels to match every environment.

Turnkey-ready

Installation, software, and operators included.

Trusted

Proven in education, hospitality, events, and corporate spaces.

HARDWARE UNEVN BASE FAMILY

Starting at **\$4,199.99**

Instant & Portable.
Pro-Grade & Versatile.
Customizable Experience.



BASE PC PACKAGES

Every BASE is game-ready.

ASUS

BASE Gamer - AMD 9060XT / Ryzen 7600 / 32GB DDR5

Balanced performance, ready for education and lounges.

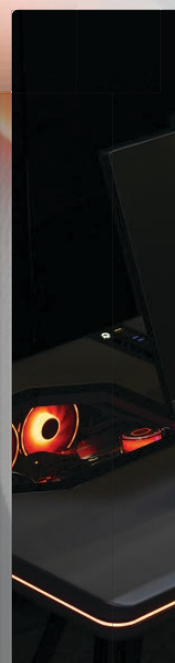
BASE Supreme - RTX 5070 / Ryzen 7 9800X3D / 32GB DDR5

Advanced performance for hybrid use and tournaments.

BASE Extreme - RTX 5080 / Ryzen 7 9800X3D / 64GB DDR5

Top-tier system for professional esports and creative workloads.

Each UNEVN BASE is built and performance-tested in partnership with OasisPC, ensuring consistent, esports-grade reliability across every unit.



ADD-ONS & ACCESSORIES

ENHANCE YOUR BASE WITH SMART ADD-ONS AND CUSTOM OPTIONS.

UNEVN Mouse Pad (XL)

Professional-grade surface designed for competitive play. Provides consistent glide and control in any environment.

Custom Mouse Pad (XL)

Add your own logo or team identity. Perfect for schools, teams, and branded lounges.

Lid Secure System

Protect your investment in public spaces. The secure locking system keeps lids safe during events or unattended use.

Custom Graphics Package

Transform your BASE into a branded centerpiece. Includes desk graphics and mouse pads with your design.

Starting at **\$99.99 / unit** (MOQ 20 pcs)



ACCESSORIES TURN EVERY
BASE INTO YOUR BASE.

**SAFER, SHARPER, AND
ON-BRAND.**

SOFTWARE & DIGITAL



SEAMLESS SOFTWARE SOLUTIONS
THAT MAKE EVERY BASE READY TO
DEPLOY, MANAGE, AND SCALE.

Windows Installation & Stress Testing

Every configuration is fully installed, tested, and optimized before delivery. Optional OOB (Out-of-Box Experience) customization available.

GGLeap

Player management, session tracking, point-of-sale, and tournament tools.

GGRock

Centralized management with bootless drive technology. Fast, reliable, and scalable.

Leap Branding

Customized login screens, logos, and backgrounds to match your venue identity.

FROM SETUP TO DAILY
OPERATIONS

**SOFTWARE MAKES YOUR
BASE EFFORTLESS TO
MANAGE**

IMPLEMENTATION

CYBER LABS

FROM LAYOUT TO LAUNCH.

UNEVN MAKES YOUR SPACE READY FOR ACTION.

Installation & Deployment

Plug & play setup, on-site or remote support for a smooth start.

Space Planning

Layouts and lounge design tailored for schools, hotels, and event venues.

Event Operators

Trained staff or partners to run esports tournaments and gaming events.

Tournament Concepts

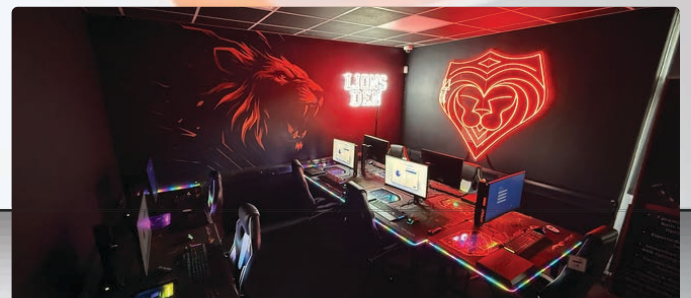
Ready-made formats and activations, from weekly competitions to festival LANs.

Business Centre / Gaming Lounge

Hybrid models that turn spaces into revenue-generating environments.

NOT JUST DESKS

**COMPLETE SPACES,
PLANNED AND
DELIVERED.**



SLA & SUPPORT

1. When you invest in UNEVN, you also invest in **long-term reliability**.
2. Our SLA (Service Level Agreement) and support services ensure that **your systems stay up, running, and optimized for esports**.
3. From remote troubleshooting to on-site assistance, we are your partner throughout the lifecycle of your BASE.

RELIABLE SUPPORT ENSURES YOUR OPERATIONS RUN SMOOTHLY, EVERY DAY.

Remote Support

Standard with every BASE, ensuring quick response to common issues.

On-Site Visits

1-2 visits per year included in SLA, additional visits available on demand.

Service Levels

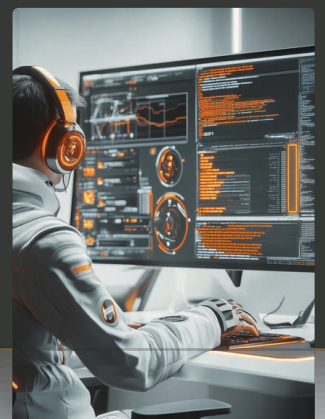
Flexible SLA tiers to match the needs of schools, hotels, and event venues.

Spare Parts Service

Fast delivery of replacement parts to minimize downtime.

Event Support

Dedicated technicians available for on-site event coverage.



BUSINESS & CONSULTING



UNEVN HELPS YOU DESIGN, LAUNCH, AND GROW LASTING ESPORTS AND DIGITAL SPACES.

Strategic Consulting

Guidance on building sustainable esports programs for schools, hotels, and corporate environments.

Concept Development

From gaming lounges to hybrid business centers, ready-to-implement models.

Operational Support

Best practices for staffing, scheduling, and maximizing utilization.

Monetization & ROI

Consulting on revenue streams, event models, and community engagement.

Partner Ecosystem

Access to UNEVN's global partner network in education, esports, and hospitality.

WE HELP YOU
BUILD SPACES THAT LAST
AND DELIVER VALUE.



MARKETING & BRANDING PACKAGES

MARKETING PACKAGES THAT ADAPT TO YOUR BUSINESS — FROM RESELLERS TO GLOBAL BRANDS.

Resellers & Distributors - *Sales materials & toolkits*

Branded sales materials (PDFs, one-pagers, catalogues) and “How to Sell UNEVN” toolkits.

Esports Teams - *Custom-branded setups*

Custom-branded desks, mouse pads, and setups to showcase identity and attract fans.

Event Organizers - *Co-branded campaigns*

Co-branded campaigns, on-site visuals, and marketing assets that boost visibility.

Corporate & Global Brands - *Activation packages*

Activation packages designed for sponsorships and fan engagement.



PRICING OVERVIEW

UNEVN reserves the right to update prices and specifications without prior notice.

Each package is built and customized case by case, ensuring the right solution for every customer.

HARDWARE	PRICE
BASE Gamer	\$4,199.99
UNEVN BASE / AMD 9060XT / Ryzen 7600 / 32GB DDR5 / Asus 25" 1080p 180hz	
BASE Supreme	\$4,999.99
UNEVN BASE / RTX 5070 / Ryzen 7 9800X 3D / 32GB DDR5 / Asus 27" 2K QHD 165hz	
BASE Extreme	\$6,299.99
UNEVN BASE / RTX 5080 / Ryzen 7 9800X 3D / 64GB DDR5 / Asus 27" 4K UHD 165hz	
ADD-ONS	
Mouse pad (XL)	\$24.99
Custom mouse pad and graphics (MOQ 20)	\$99.99 / unit
Lid secure system	\$59.99
SOFTWARE	
ggLeap (licence)	\$14 / unit / mo
ggRock (licence + server)	starting from \$7000 / year
Leap branding	Agreed separately
SLA & SUPPORT	
SLA Basic - Enterprise	Agreed separately
Onsite event support	Agreed separately
Spare parts service	Agreed separately
Insurance solutions	Agreed separately

PRICING OVERVIEW

UNEVN reserves the right to update prices and specifications without prior notice.

Each package is built and customized case by case, ensuring the right solution for every customer.

IMPLEMENTATION

PRICE

Installation & deployment

Agreed separately

Space planning

Agreed separately

Event operators

Agreed separately

Tournament concepts

Agreed separately

Business Centre / Gaming Lounge

Agreed separately

BUSINESS & CONSULTING

Custom branding & lounge graphics

Agreed separately

Resort/hotel concept packages

Agreed separately

Licensing models (rental) Custom

Agreed separately

Financing & leasing

Agreed separately

Strategic consulting

Agreed separately

MARKETING & BRANDING PACKAGES

Entry Branding Pack

Agreed separately

Standard Marketing Pack

Agreed separately

Premium Marketing Pack

Agreed separately

Distributor/Reseller Partner Pack

Agreed separately

Tailored Marketing Strategy

Agreed separately



www.unevn.gg

contact@unevn.gg

Fallåker 1 D, 02740 Espoo, Finland

GET IN TOUCH WITH OUR TEAM

WE ARE HERE TO HELP YOU DESIGN, PLAN,
AND DELIVER THE RIGHT SOLUTION.

WHETHER IT'S A SINGLE SETUP OR A
COMPLETE ESPORTS FACILITY.

Reach out via email or LinkedIn.

We're happy to discuss your project.



Jaakko Kievari
jaakko@unevn.gg



Maria Hamminga
maria@unevn.gg

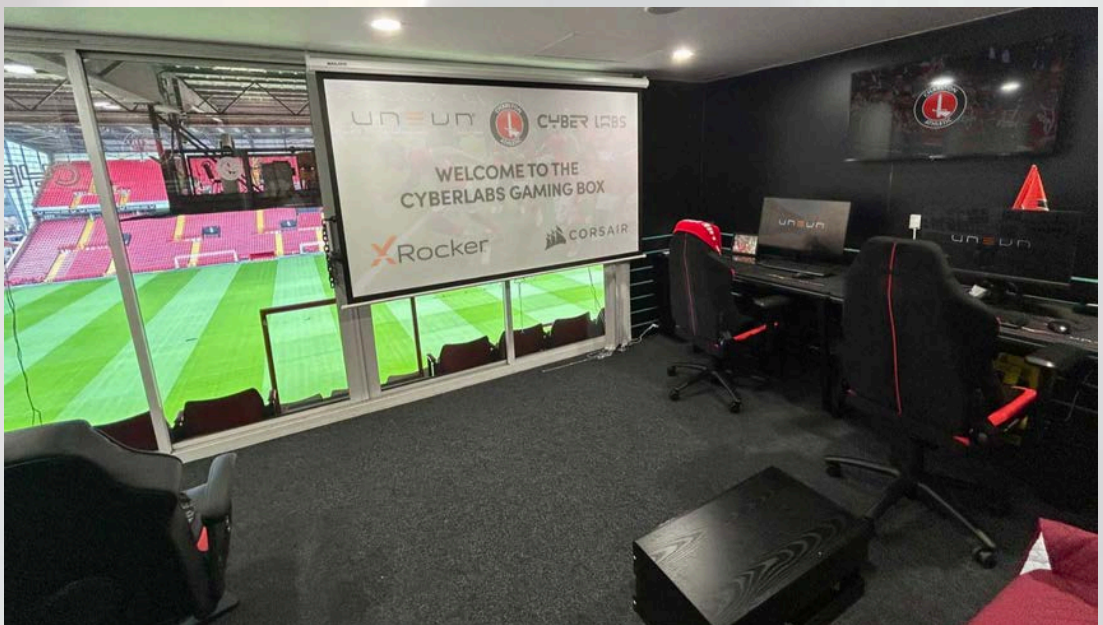


James Fraser-Murrison
james@fraseresportsltd.com

IMAGINE MORE.
PLAY ANYWHERE.



Agon by AOC booth Dreamhack, Sweden



Gaming Box at Charlton Athletic FC Stadium, UK



Gaming LAB at NorQuest College, Canada



Esports space at Island Learning Centre, UK



Hotel room at Hotel Valo, Finland



Esports space at St. Albert Public School, Canada

The background of the entire page is a complex network of black dots connected by thin black lines, resembling a molecular structure or a digital network. Some dots are highlighted with a bright orange glow. The background is split vertically: the left and right sides are a lighter, hazy grey, while the central area is a solid dark grey where the text is located.

UNEVN

Unevn Ltd

UNEVN.GG

www.unevn.gg

contact@unevn.gg

UNEVN EXAMPLE PACKAGES CHOOSE YOUR SOLUTION

EDUCATION

STARTER ESPORTS CLASSROOM

From €27,000 (one-time setup)

Entry-level esports classroom for schools to start small and grow.

- 7 × BASE Gamer (25/27)
- ggLeap licenses (12 months) (optional)
- Installation & space planning
- Fraser Esports consulting
- SLA Basic (1 year, 1 visit included) (optional)

HOSPITALITY

GAMING LOUNGE STARTER

From €14,200 (one-time setup)

Compact lounge concept that transforms space into a guest magnet.

- 4 × BASE Supreme (25/27)
- ggLeap licenses (12 months)
- Branding & lounge graphics (starter pack)
- Installation & training
- SLA Basic (1 year, remote support)

LAN CAFÉ

ENTERPRISE LEASING

Approx. €5,600–6,000 / month (20 desks, 3–36 month contract)

Esports café solution with predictable costs and scalable growth.

- 20 × BASE Supreme (25/27)
- ggLeap venue management software
- Optional ggRock (for diskless PC management)
- Custom branding (logos, mouse pads)
- Event operator support available
- SLA Pro (2 visits/year + spares)

ALL PACKAGES ARE FULLY CUSTOMIZABLE
SCALE, BRAND, AND TAILOR THEM TO YOUR
VENUE.

